

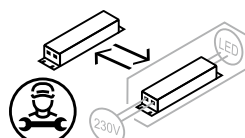


Linea AS-XS(-HE)

SPECIFICATIONS

Beam angle (FWHM)	18° / 37° / 60° / 80°
UGR (4H8H 70/50/20)	<19 (18° + 37°)
Fixture material	Die cast aluminium / Glass
Environment	Indoor
IK rate	IK03
Operating temperature (Ta)	-20°C / +45°C ¹
Safety marks	EN60598 / EN62031 / EN 62471
EMC compliance	EN55015
Colour consistency (SDCM)	MacAdam step 3
Warranty	7 years * (within the European Union and the countries of the Free Trade Association for products delivered after 1 May 2015)
Energy class	These products contain a light source of energy efficiency class: CRI95 - D (3000K/4000K)

This luminaire contains built-in LED lamps. There are no exchangeable parts inside the luminaire. EU 874/2012



IP20

LINEA AS-XS-HE

3000K/4000K

ITEM SPECIFICATIONS (PART A)

Description	18°		37°		60°		80°		mA
	Item code	UGR	Item code	UGR	Item code	UGR	Item code	UGR	
LINEA AS-XS-HE 3300Lm 3000K CRI95 No dim	17R403XXHK02	13.2	17R403XXHL02	13.1	17R403XXHM02	16.3	17R403XXYR02	22.9	700
LINEA AS-XS-HE 3300Lm 3000K CRI95 Dali	17R403XXE402	13.2	17R403XXE502	13.1	17R403XXE602	16.3	17R403XXYM02	22.9	700
LINEA AS-XS-HE 3300Lm 3000K CRI95 Casambi	17R403XXJ402	13.2	17R403XXJ502	13.1	17R403XXJ602	16.3	17R403XXB802	22.9	700
LINEA AS-XS-HE 3500Lm 4000K CRI95 No dim	17R403XXHN02	13.4	17R403XXHP02	13.3	17R403XXHQ02	16.5	17R403XXYY02	23.1	700
LINEA AS-XS-HE 3500Lm 4000K CRI95 Dali	17R403XXE702	13.4	17R403XXE802	13.3	17R403XXE902	16.5	17R403XXYW02	23.1	700
LINEA AS-XS-HE 3500Lm 4000K CRI95 Casambi	17R403XXJ702	13.4	17R403XXJ802	13.3	17R403XXJ902	16.5	17R403XXB902	23.1	700

ITEM SPECIFICATIONS (PART A)

Description	W	Lm	Lm/W	CRI (typ.)	Pf	Ripple	Inrush current	B-16A Fuse	Safety class	Energy class
LINEA AS-XS-HE 3300Lm 3000K CRI95 No dim	28,0	3300	118	95	0.95	<3%	7A 13µs	50	I	D
LINEA AS-XS-HE 3300Lm 3000K CRI95 Dali	28,0	3300	118	95	0.97	<3%	5A 50µs	50	I	D
LINEA AS-XS-HE 3300Lm 3000K CRI95 Casambi	28,0	3300	118	95	0.95	<3%	5A 50µs	50	I	D
LINEA AS-XS-HE 3500Lm 4000K CRI95 No dim	28,0	3500	125	95	0.95	<3%	7A 13µs	50	I	D
LINEA AS-XS-HE 3500Lm 4000K CRI95 Dali	28,0	3500	125	95	0.97	<3%	5A 50µs	50	I	D
LINEA AS-XS-HE 3500Lm 4000K CRI95 Casambi	28,0	3500	125	95	0.97	<3%	5A 50µs	50	I	D

ITEM SPECIFICATIONS (PART C)

Description	Weight	Dimensions single carton	Quantity per carton	Expected Lifetime			Reported Lifetime*		
				L70B10	L80B10	L90B10	L70B10	L80B10	L90B10
Linea AS-XS-HE	840 gr	251x241x123mm	12 pcs	653.000 hrs	529.000 hrs	465.000 hrs	>105.000 hrs	>105.000 hrs	>105.000 hrs

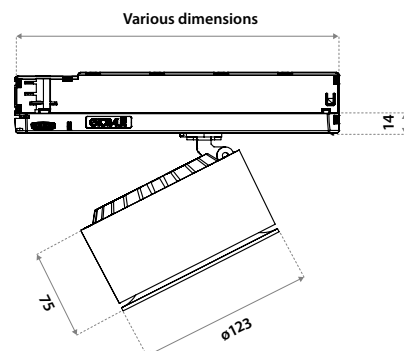
All values are measured at 230V (+/- 7%). * Based on 19.000hrs of LM80 testing at 1200mA and a Tc85°C.

CRI95 CHOOSE YOUR LV LUMEN OUTPUT

	mA	W	Lumen Output		Lumen / Watt		UGR				Driver types			
			3000K	4000K	3000K	4000K	3000K				No dim	Triac	Dali	Casambi
							18°	37°	60°	80°				
Special request	500	19,4	2400	2500	124	128	12.1	12.0	15.2	21.8	GA-016	145166	PRO-T61050N	127884/127886
Standard	700	28,0	3300	3500	118	125	13.2	13.1	16.3	22.9	GA-016	145166	PRO-T61050N	127884/127886
Special request	800	32,5	3725	3950	115	122	13.6	13.5	16.7	23.3	GA-016	145166	PRO-T61050N	127884/127886

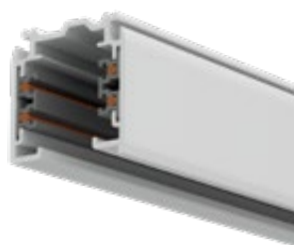
DIMENSIONS

With integrated power supply in the adapter, not visible after installation.



TRACKS

On request! Ask our sales department about the possibilities.



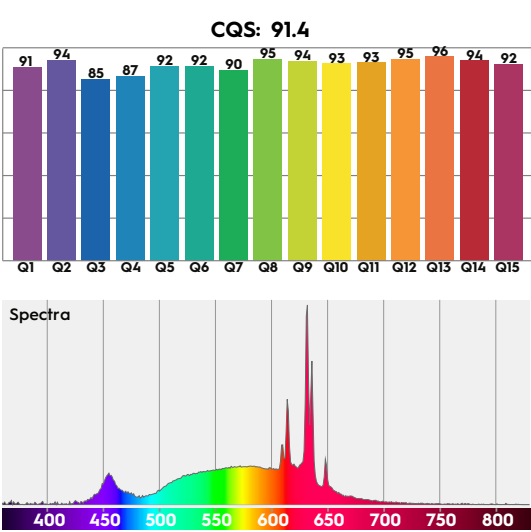
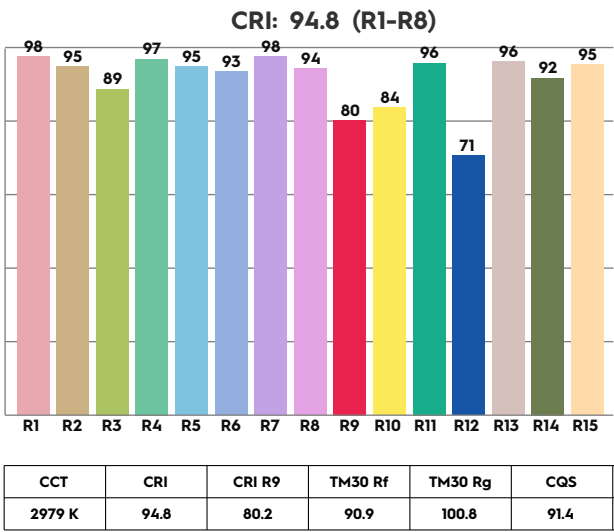
HONEYCOMB ACCESSORY

Description	Item code
Honeycomb filter	009C03BL0000



Reduces the light output by -25% compared to clear glass.

3000K



4000K

